

# Welcome to Year 1 2025-2026

Meet the Teacher session



# Topics Covered

01

Meet the Team

02

Our 3 Rules

04

Our School Day

03

Our Values

05

Our Learning

06

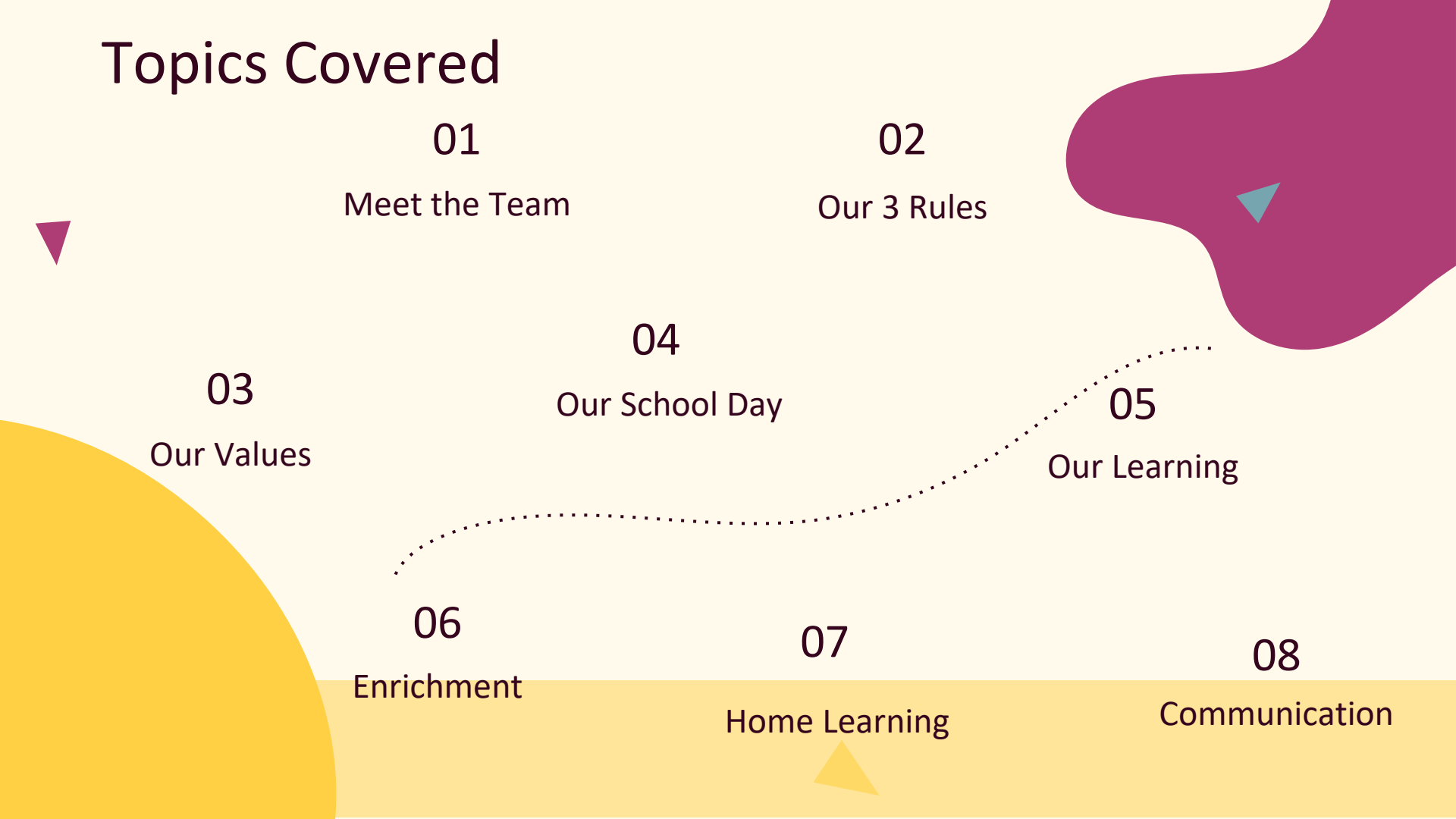
Enrichment

07

Home Learning

08

Communication



# Meet our Year 1 Team



**Kate Clarke**  
1B Class Teacher



**Jenna Wood**  
1W Class Teacher



**Simone Lance**  
Y1B TA



**Alison Kenward**  
Y1B TA



**Maggie Sloggett**  
Y1W TA



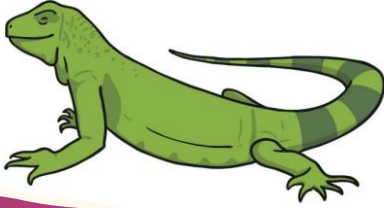
## Our 3 Rules

**BE SAFE**

**BE READY**

**BE RESPECTFUL**

# Our Bridge Schools Values & Learning Characters



Creative



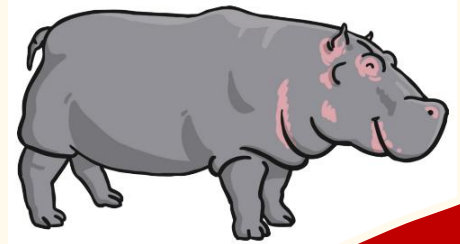
Responsible



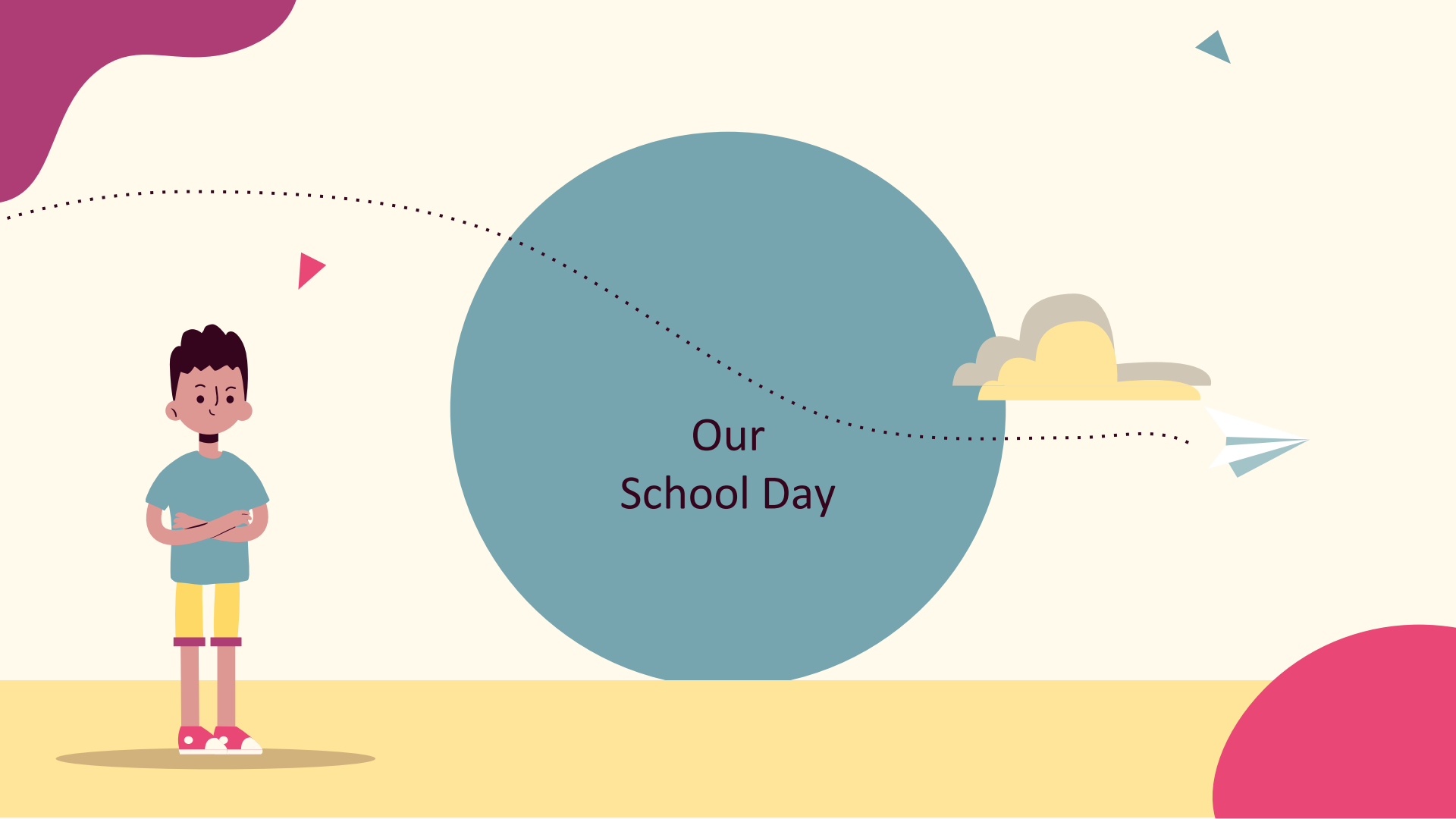
Curious



Determined



Enthusiastic



Our  
School Day

# Our School Day

This term we have PE on a Thursday. Please ensure your child wears their PE on a Thursday.



WC: 8th September 2025	8:30	8:50	09:00-09:30	09:30-09:45	09:50-10:00	10:00-10:45	10:45-11:00	11:00-11:45	11:55-12:45	13:00-13:15	13:15-14:00	14:00-14:15	14:15-14:50	15:00-15:10	15:10
Monday	Morning	Register	Assembly	Phonics (9:20-9:50)	Snack time	English/COOL time		Maths	Lunch TA Lunch 11:30-12:00 Teacher Lunch 12:00-12:45	Handwriting	Wider Curriculum Art		COOL time	Story time	
Tuesday			Phonics Level 4 Week 1	Guided reading (decoding)		English/COOL time		Maths		Handwriting	Wider Curriculum Art		Music		
Wednesday			Phonics Level 4 Week 1	Guided reading (prosody)		English/COOL time		Maths		Handwriting	Wider Curriculum Art		2:20-2:45 Assembly: Singing		
Thursday <i>Reading Books</i>			Phonics Level 4 Week 1	Guided reading (comp)		English/COOL time		Maths		Handwriting	1:15 PE		PE 2:30 Library		
Friday <i>Home learning</i>			Phonics Level 4 Week 1	Guided reading		RE Lesson 1	Playtime	PSHE Lesson 1		COOL Time		Playtime	Assembly: Shining Stars		Home time



# Our Learning

## Year 1 Curriculum Map Term 1 2024-2025



### English

#### Fiction: We're Going on a Bear Hunt

The children will use the text to sequence sentences to form a narrative, retell the story using a story map and invent a new problem for the family, which they will act out and we will record for the School website.

#### Non-Fiction: Fact Files

We will look at a range of non-fiction books, identify the features of a fact file and write our own fact files based on brown bears. These will be shared with Year 2.



### Computing

#### Computing systems and networks- improving mouse skills:

Knowing how to log in and navigate around a computer, developing mouse skills, learning how to drag, drop, click and control a cursor to create works of art inspired by Kandinsky and self-portraits.



### History

#### Key event: Great Fire of London.

Place event on a timeline and know the key people involved. Answer the 5Ws about the event. Understand the difference between things that happened in the past and the present. Tell stories and experiences about the past. Talk, write, draw and role play events and people from the past.



### Music

**Hey You!** by Joanna Mangona - an Old-School Hip Hop tune written for children to learn about the differences between pulse, rhythm and pitch and to learn how to rap and enjoy it in its original form. Children will listen and appraise other Old-School Hip Hop tunes.

**Rhythm in the way we walk + banana rap** This unit of work builds on previous learning focusing on these two songs. Children will continue to embed the interrelated dimensions of music through games and music.



### Geography

#### What is Like here?

Locating where they live on an aerial photograph and recognising features within a local context. Creating maps using classroom objects before drawing simple maps of the school grounds. Following simple routes around the school grounds and carrying out an enquiry as to how their playground can be improved. (Fieldwork included).



### PSHE

**Being Me in My world:** Children discuss rights and responsibilities, and choices and consequences. Learn about being special and how to make everyone feel safe in their class as well as recognising their own safety.

**Celebrating differences:** children explore the similarities and differences between people and how these make us unique and special. Learn about friendship and bullying, how it might feel and when and who to ask for help.



### Science

**Animals including Humans:** All about me is the first part of two units. In this unit the children will learn how to identify, name, draw and label the basic parts of the human body and say which part of the body is associated with each sense.

**Seasonal change-** The children will observe change across the four seasons and describe weather associated with the seasons and how day length varies.



### PE

#### Locomotion / Health + Fitness

Working on fundamental physical literacy skills through a carousel of physical activities.

#### Ball skills throw + catch / Target Games

Ball skills and understanding the rules of safe play



### Maths

- Number: Place Value (within 10)
- Number: Addition and Subtraction (within 10)
- Geometry: Shape



### RE

#### What do Christians believe God is Like?

Children explore parables and think about what these can teach us about what Christians believe God is like. Children then investigate how Christians put their beliefs about God into practice in worship.

#### Why does Christmas matter to Christians?

Children will revisit the story of the birth of Jesus as told in the Gospels and explore why Jesus is important for Christians. They will give examples of ways in which Christians use the story of the nativity to guide their beliefs and actions at Christmas.



### Art

#### Drawing Henry Moore (Bears)

Children will experiment by mark making different lines and textures using a range of pencils, charcoal and different paper types. These skills will be used to sketch a bear in the style of Henry Moore.

#### Painting Paul Klee + Emma Burleigh (Landscapes and lines)

Children are introduced to watercolours, how to use them and the effects they can create.



### DT

**Mechanisms 1 - Making a moving story book:** Explore slider mechanisms and the movement they output to design, make and evaluate a moving storybook from a range of templates.





## Enrichment

### **Autumn term**

- Visit to Wadebridge Library and walk around Wadebridge (date to be set)

### **Spring term**

- WOW day – Emperor Penguins

### **Summer term**

- Visit to the Cornwall Bird of Prey Centre (to be confirmed)

# Events

**Year 1 and Year 2 Nativity:** Wednesday 17<sup>th</sup> December 9:30am & 2:00pm

**Stay and Learn:** Thursday 5<sup>th</sup> February (9:00am)

**Year Group Assembly:** Thursday 21<sup>st</sup> May (9:00am)

# Home Learning

## Reading

Throughout the school, we emphasise developing a love of reading and books. From Reception to Year 6, reading should take place daily. Regular daily reading at home is so very important to help your child in becoming a fluent reader. We encourage parents to read and discuss literature with their children and believe that reading should be a shared experience where possible.

Each child has a home reading record that is included within their reading packet. This record has key information about Phonics along with grapheme charts and tricky words. Each week, the children will be sent home with Phonics learning, in addition to regular reading. All Early Reading advice states that when teaching children to read, they encounter a wealth of texts that are almost fully decodable (only a few common exception/tricky words). To ensure that we are in line with Trust and Local Authority guidelines, we will no longer be issuing book banded books to children to take home. Instead, they will bring home a library book and a decodable mini book. In time, your child will be granted access to an electronic copy of a Rhino Reader book that they have been using in Guided Reading sessions. More information to follow...

## Home Learning Review

We will shortly be carrying out a whole school Home Learning Review. We will be asking for feedback from parents/carers, children and staff, as well as considering what best practice/research shows.

# Phonics Screening Check: Monday 8<sup>th</sup> – Friday 12<sup>th</sup> June 2026

## PHONICS SCREENING CHECK

- The National Phonics Screening Check is a statutory assessment.
- This year it will take place the week commencing 8th June 2026.
- The check is a list of 40 words using a range of sounds that pupils have learnt. Some of them are real and some of them are nonsense/alien. For example chip and chaizz.
- Pupils are encouraged to sound out every word and blend the words back together. It is important that the children sound out every word so that they do not miss any letters.
- The check will take place with Mrs Clarke (1B) and Mrs Wood (1W).
- It is very similar to the activities that take place during daily phonics sessions.
- Pupils who do not pass the test this year will receive additional support in Year 2 when they retake the test.

# Communication

- Fortnightly Weekly News
- Year group webpage on the school website
- Termly Curriculum Maps
- Parent Teacher Consultations: 21<sup>st</sup>/22<sup>nd</sup> October and 24<sup>th</sup>/25<sup>th</sup> February
- Email us directly or contact via the office
- Read the weekly Head's Blog
- Follow us on Facebook
- Texts & emails from school with important updates

Please remember, you can always pop and see us at the end of the day when you collect your child. We are a very approachable team!



# FOWPA

Friends of Wadebridge Primary Academy (FOWPA)

We are a PTA group of parent/carers volunteers, who fundraise for our School.

We are always looking for volunteers or businesses that can help support these efforts.

If you have any interest in getting involved, please email [FOWPA@wadebridgeprimary.co.uk](mailto:FOWPA@wadebridgeprimary.co.uk) or contact the secretary.

Thanks for your support!



# Any questions?



If there are any questions that we haven't answered, do stick around for a chat. We are here to help!