

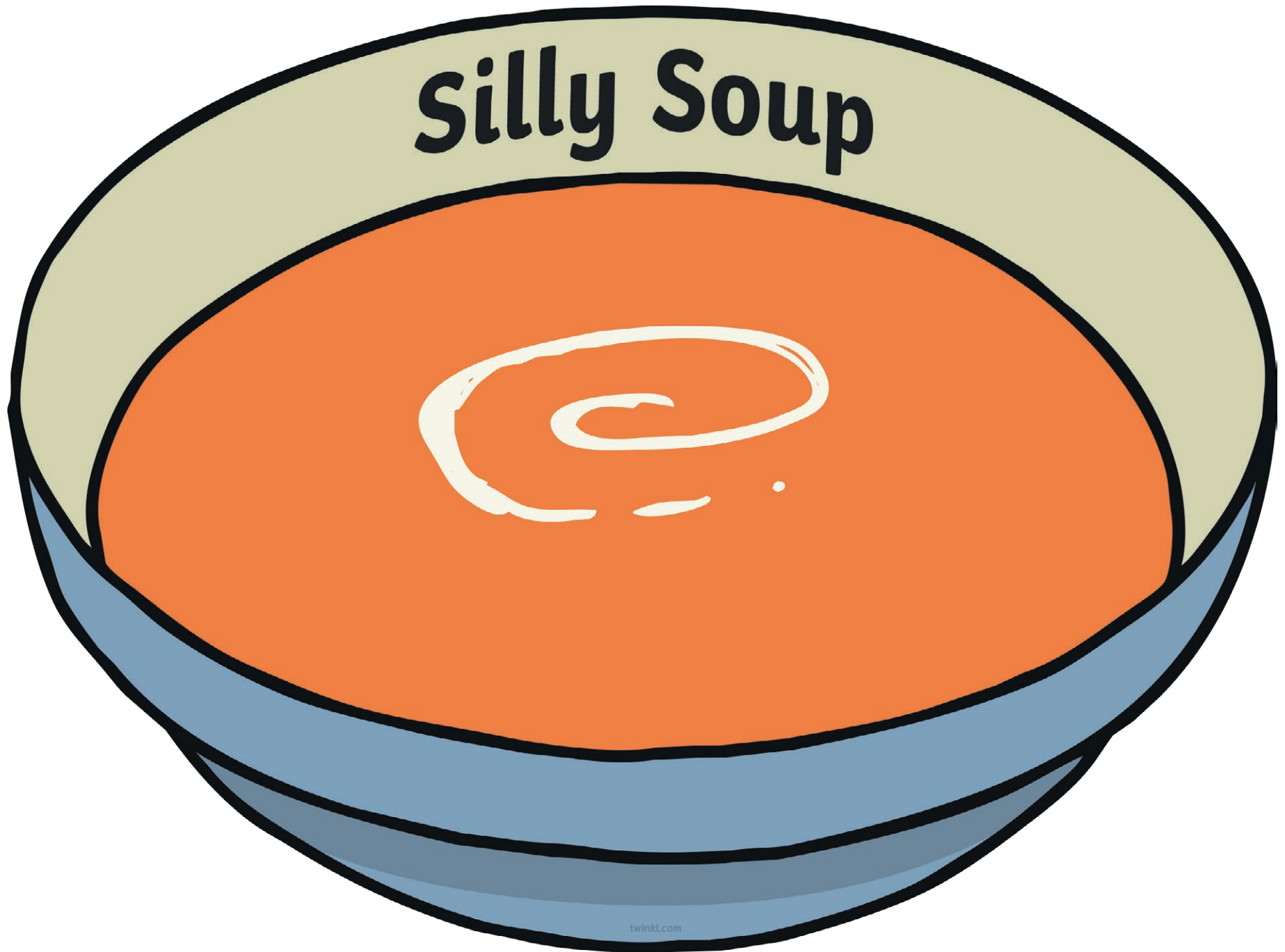
Initial Sound Silly Soup Game

How to Play

1. Play as a small group.
2. Introduce the idea of making 'Silly Soup' by adding lots of funny ingredients to the bowl.
3. Choose the initial sound that your soup will focus on by showing the cards with the chosen grapheme on.
4. Lay out the picture cards related to your focus sound along with some incorrect pictures.
5. Ask the children to take turns to choose a picture which starts with the focus sound. Put it into the soup.
6. You could extend the activity by asking the group to think of, or draw ideas of their own.
7. Play again by changing the initial sound.

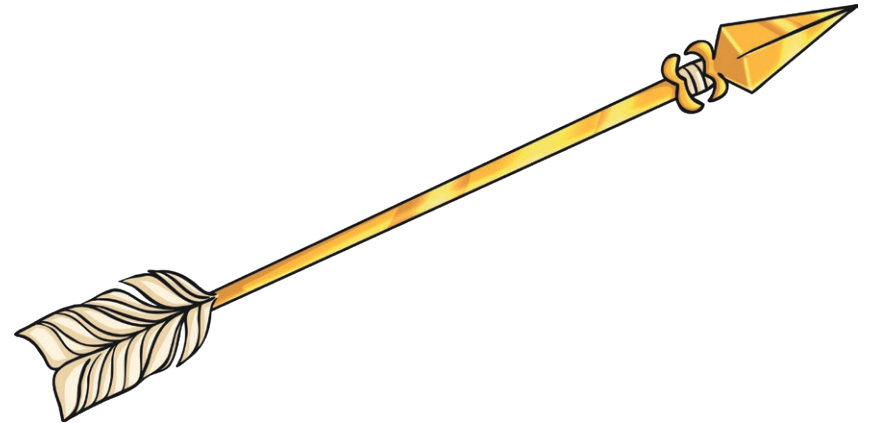
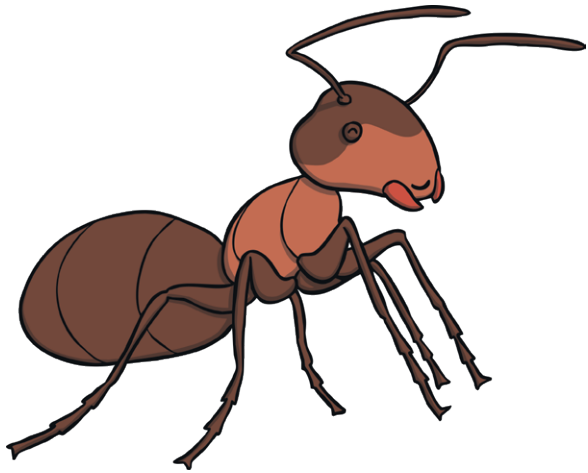
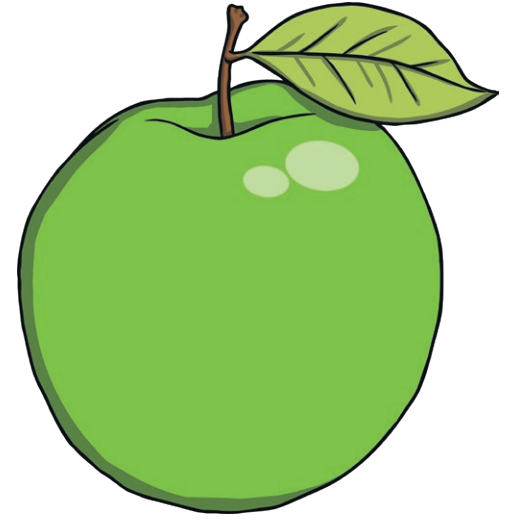


Silly Soup



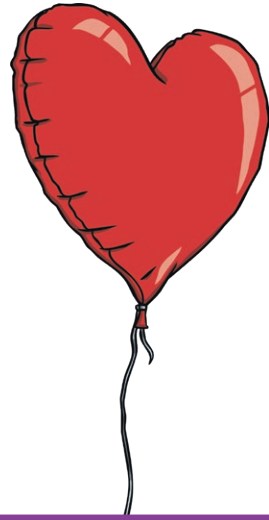
Initial Sound Silly Soup Game

a



Initial Sound Silly Soup Game

b



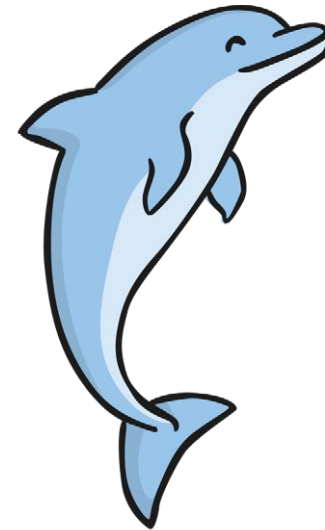
Initial Sound Silly Soup Game

C



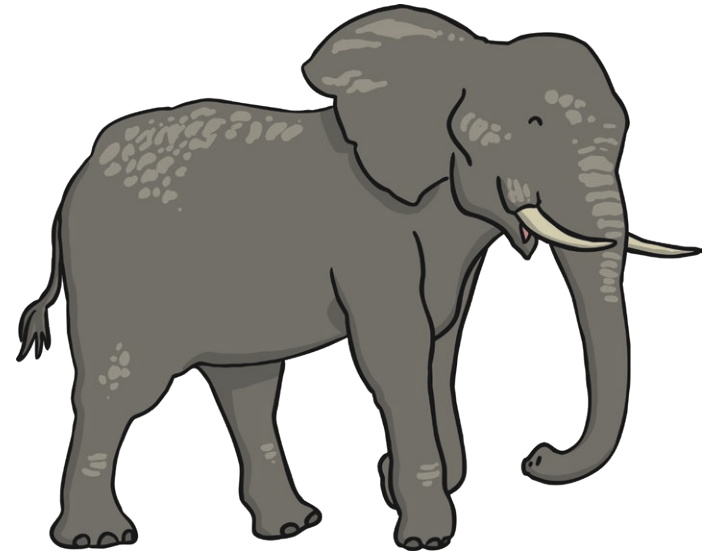
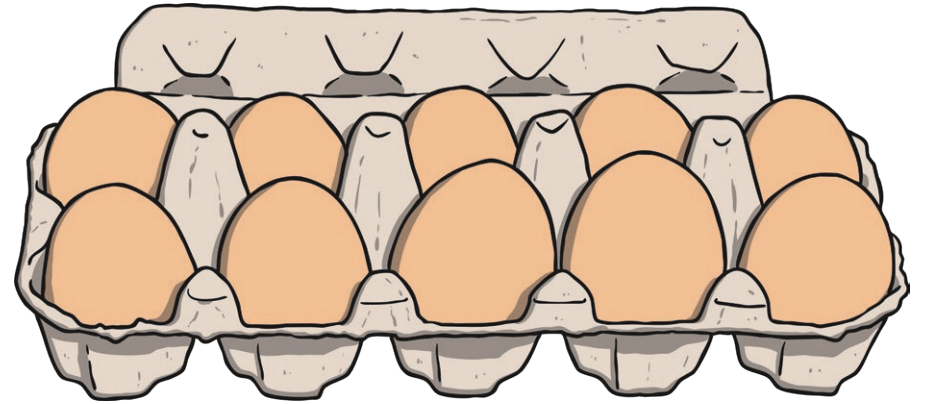
Initial Sound Silly Soup Game

d



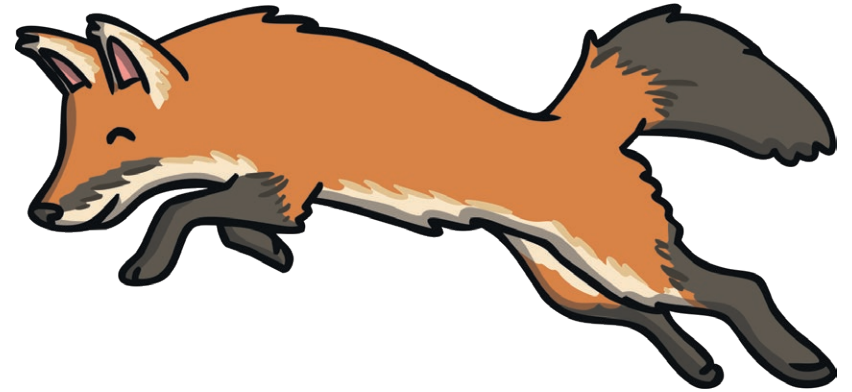
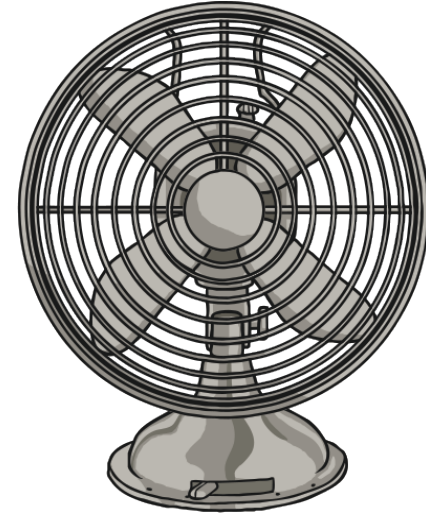
Initial Sound Silly Soup Game

e



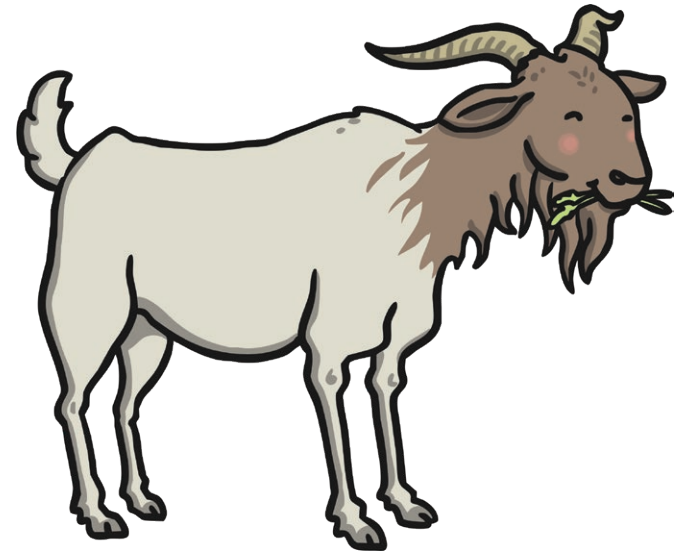
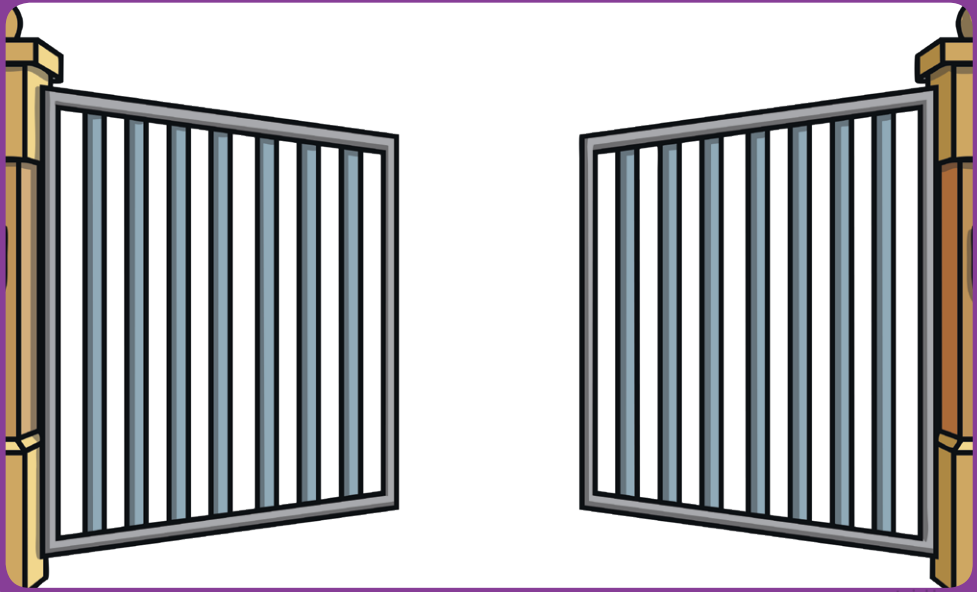
Initial Sound Silly Soup Game

f



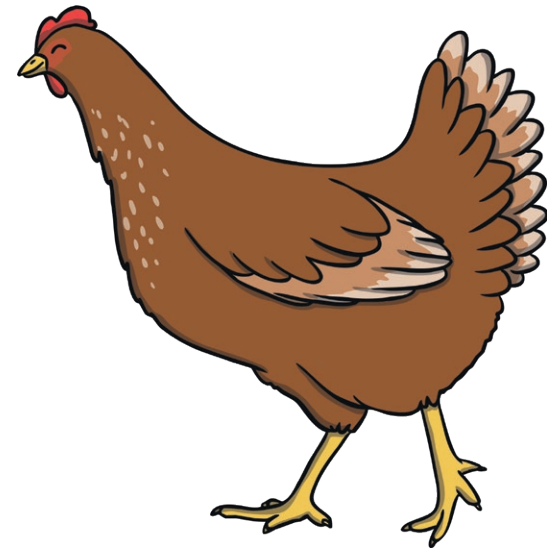
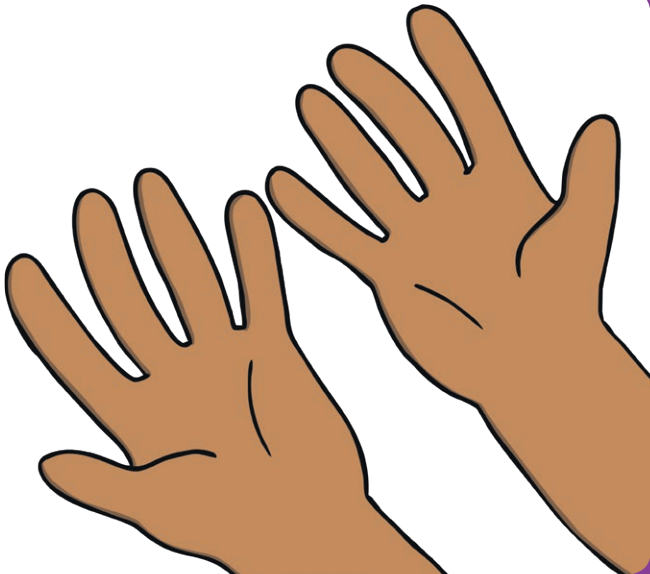
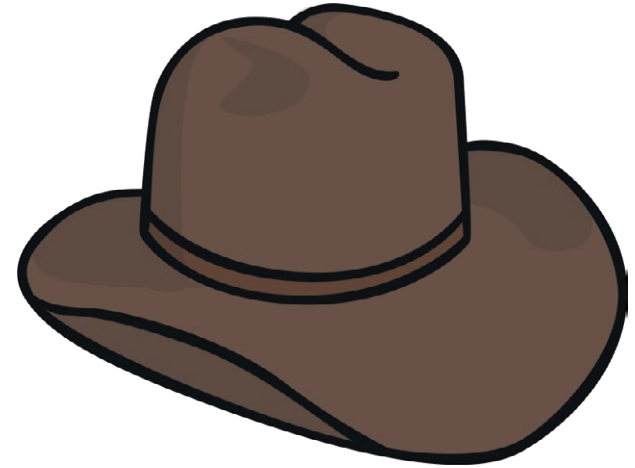
Initial Sound Silly Soup Game

g



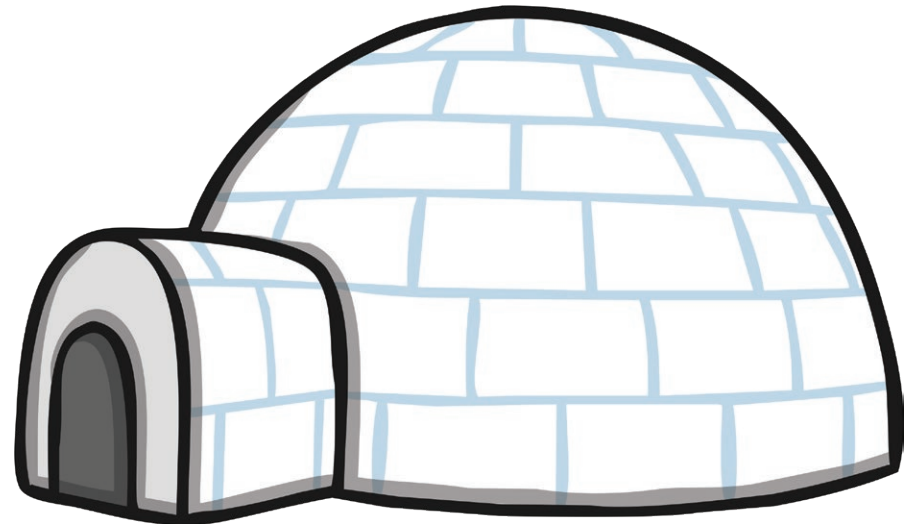
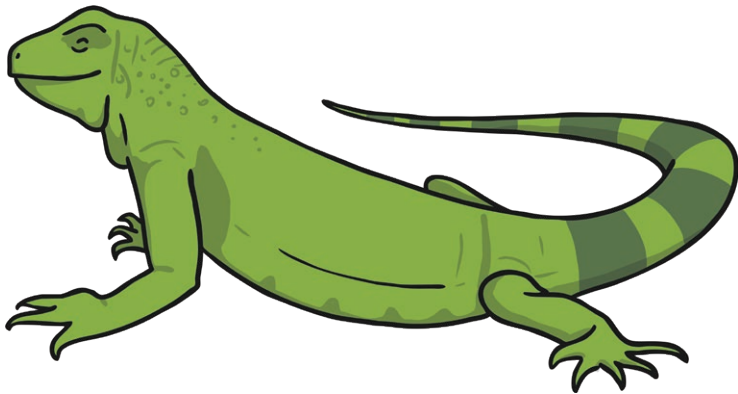
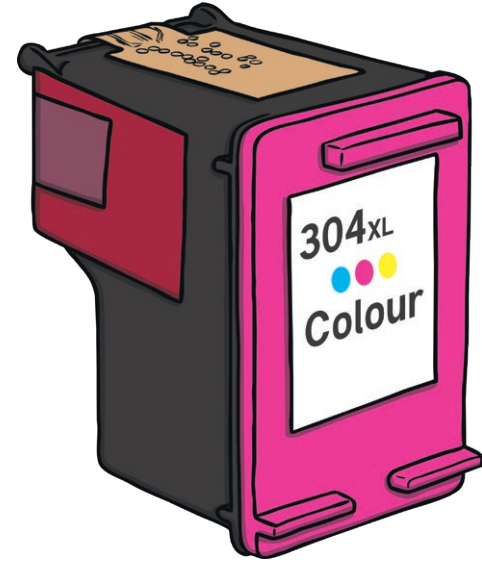
Initial Sound Silly Soup Game

h



Initial Sound Silly Soup Game

i



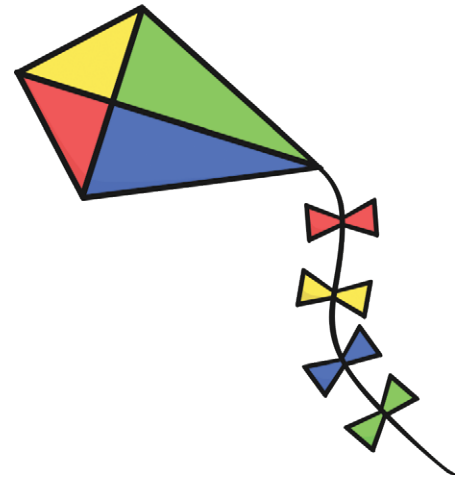
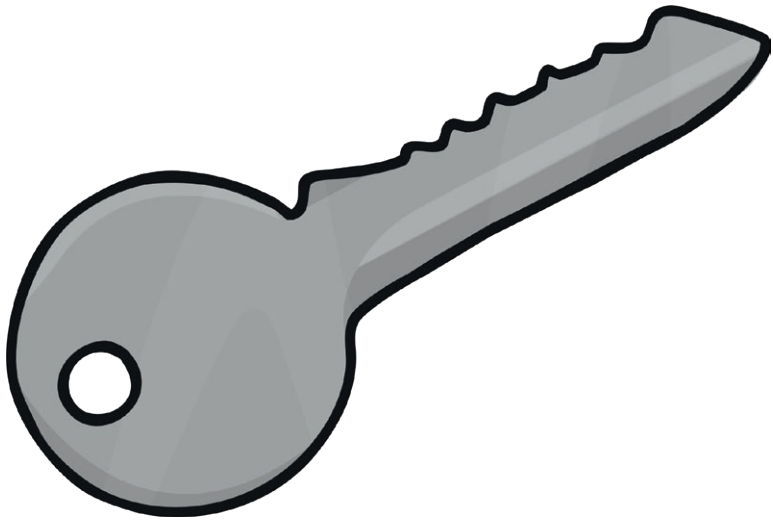
Initial Sound Silly Soup Game

j



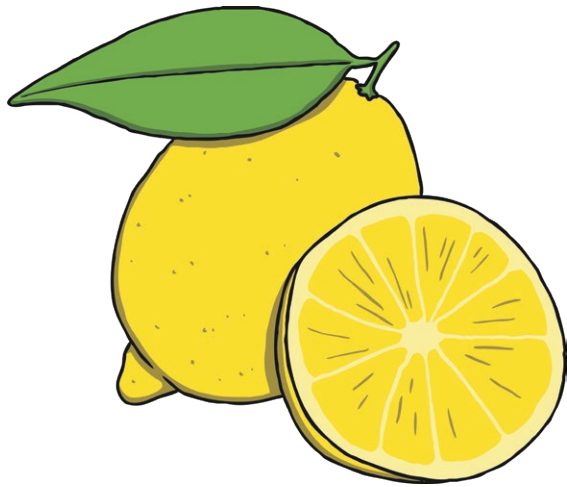
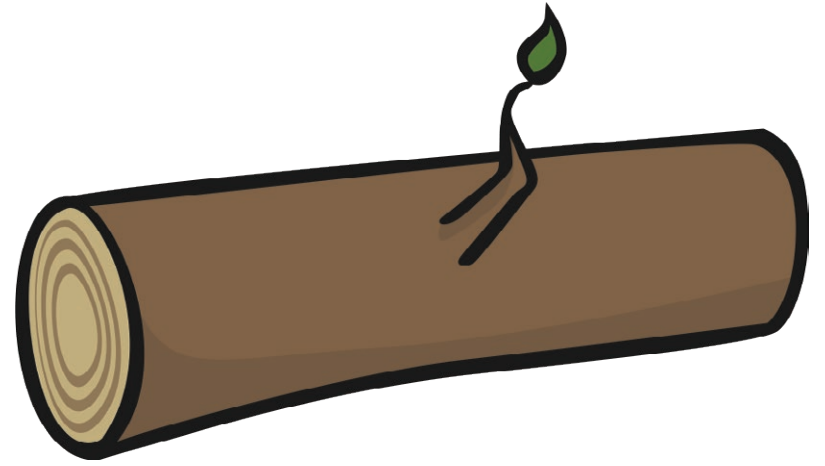
Initial Sound Silly Soup Game

k



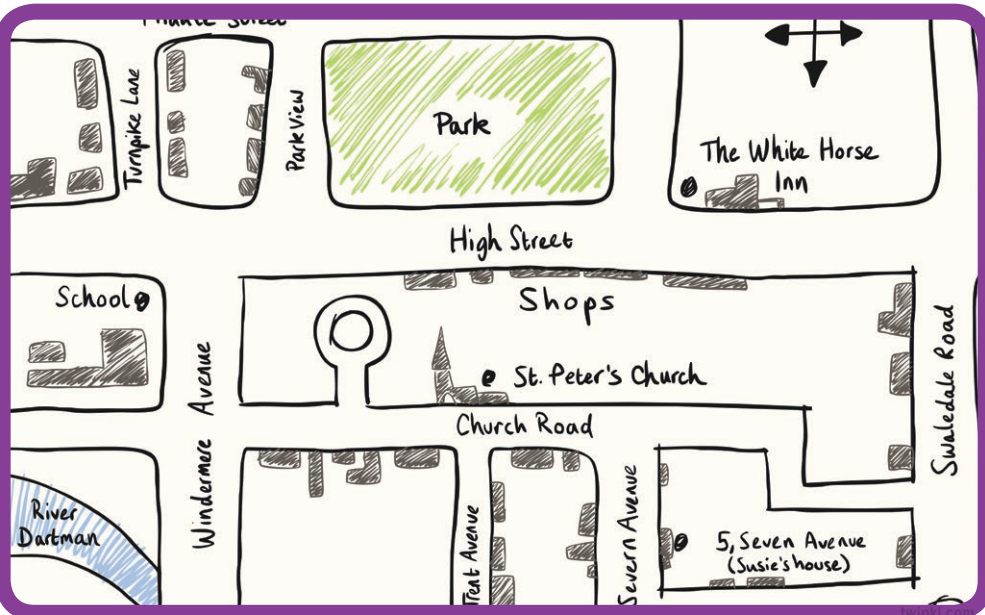
Initial Sound Silly Soup Game

L



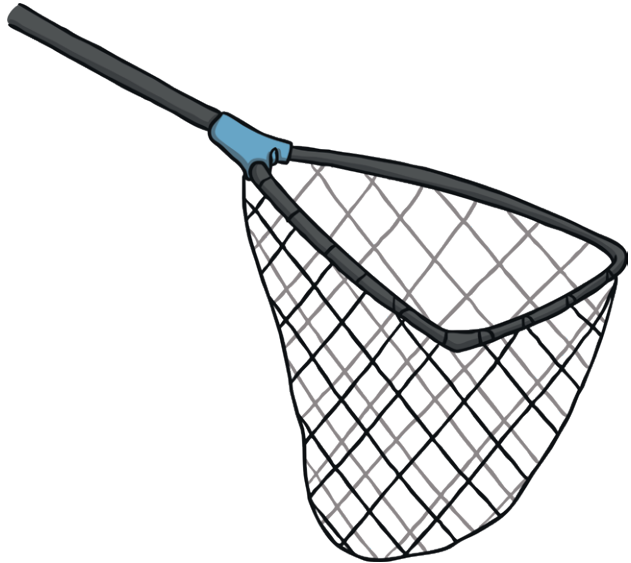
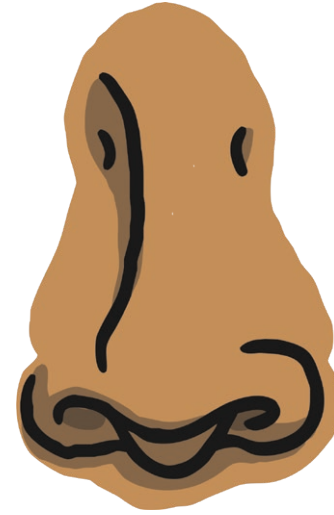
Initial Sound Silly Soup Game

m



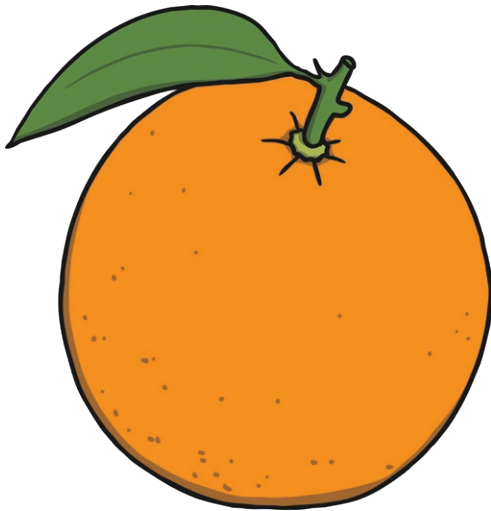
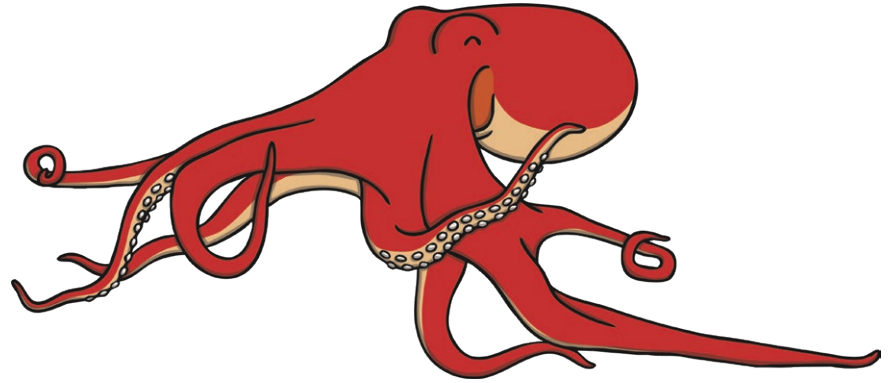
Initial Sound Silly Soup Game

n



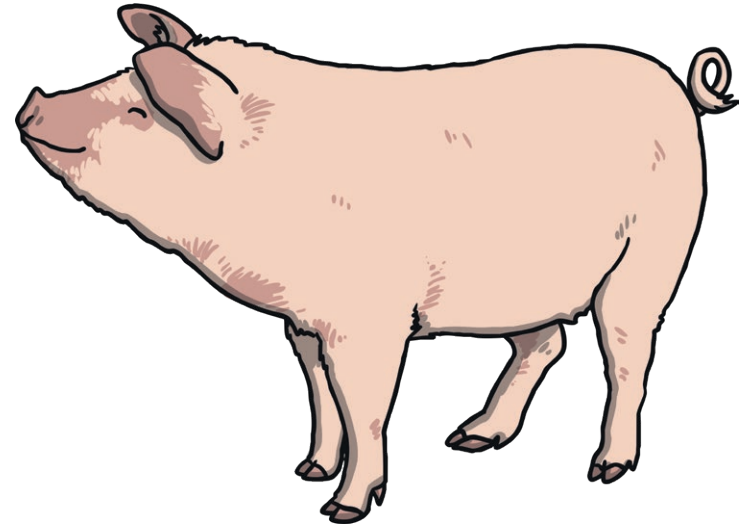
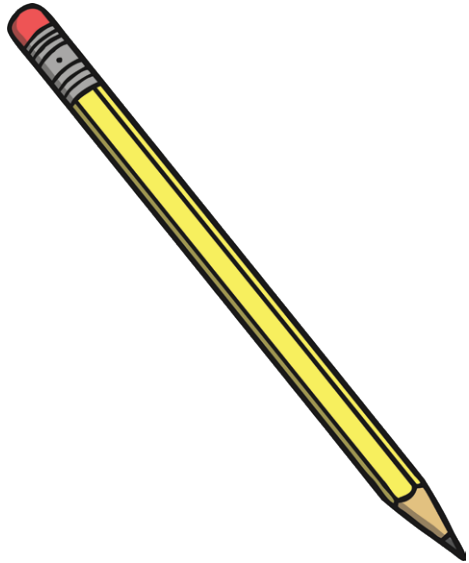
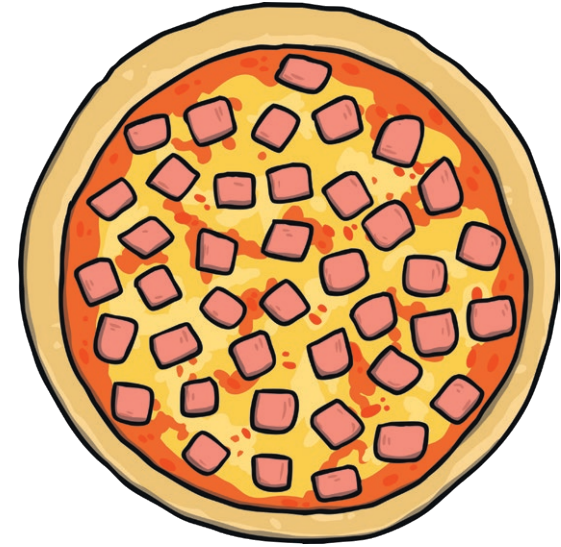
Initial Sound Silly Soup Game

O



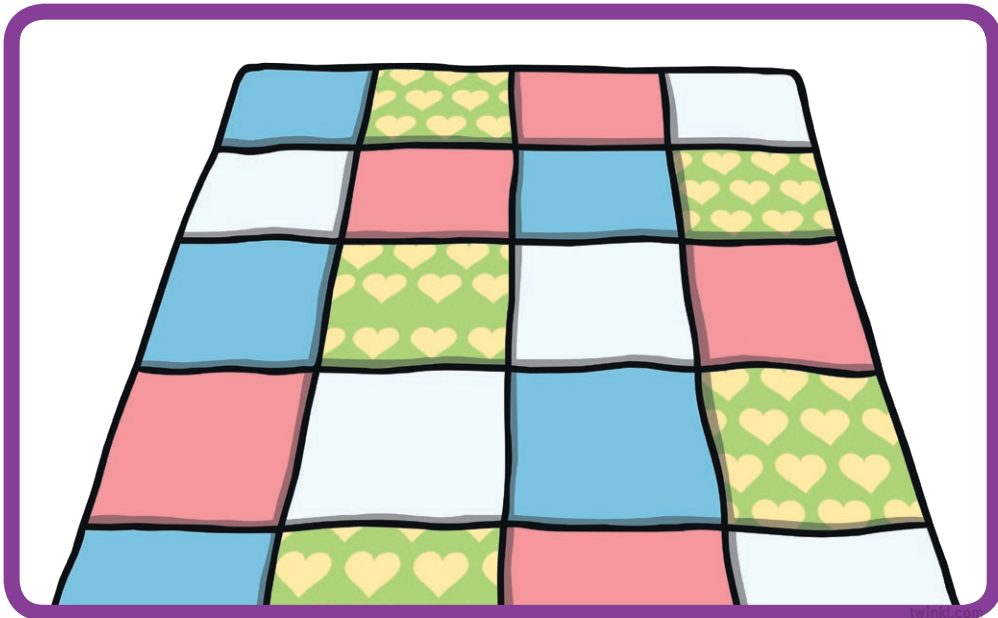
Initial Sound Silly Soup Game

p



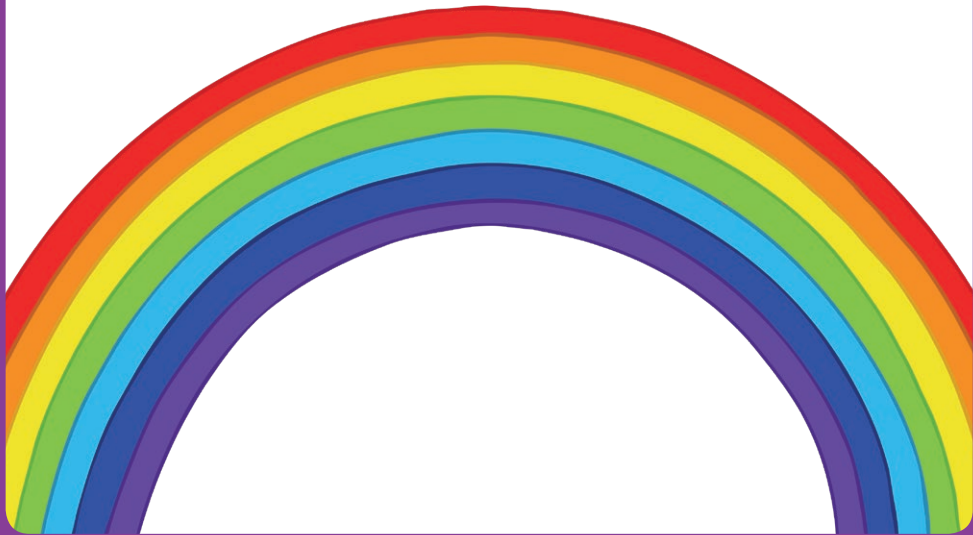
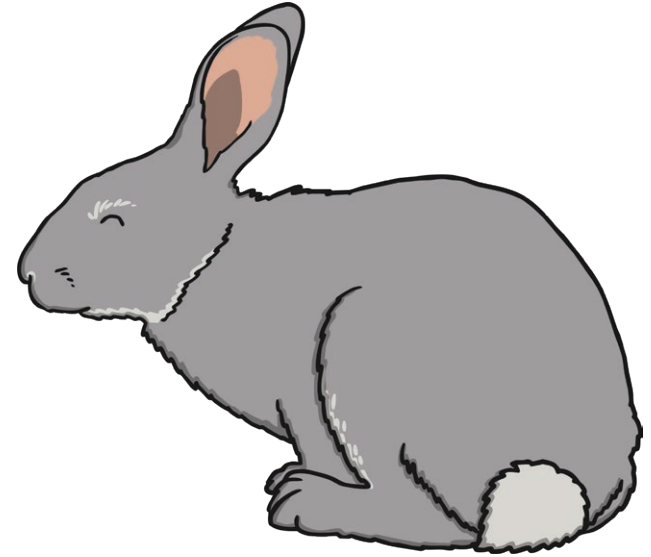
Initial Sound Silly Soup Game

q



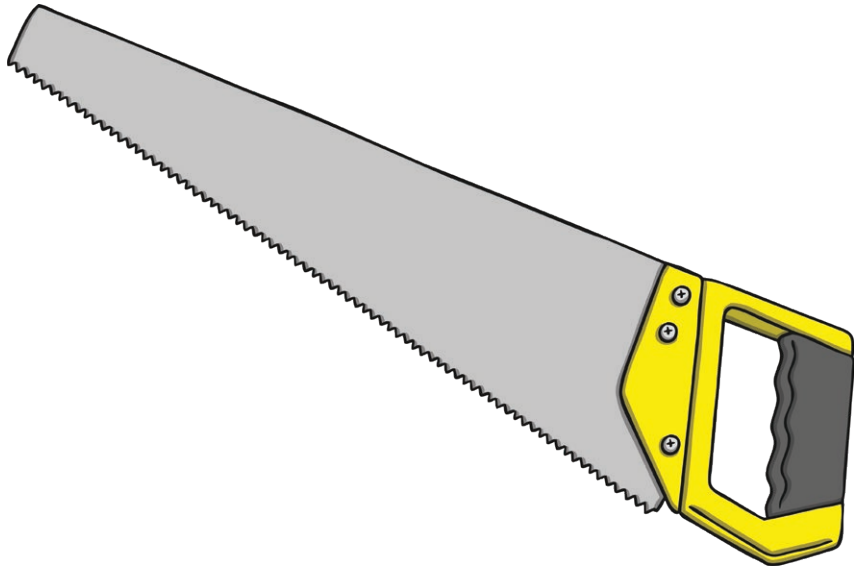
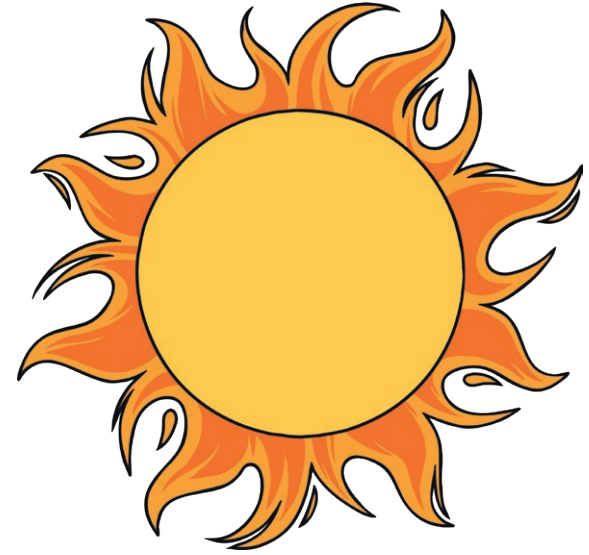
Initial Sound Silly Soup Game

r



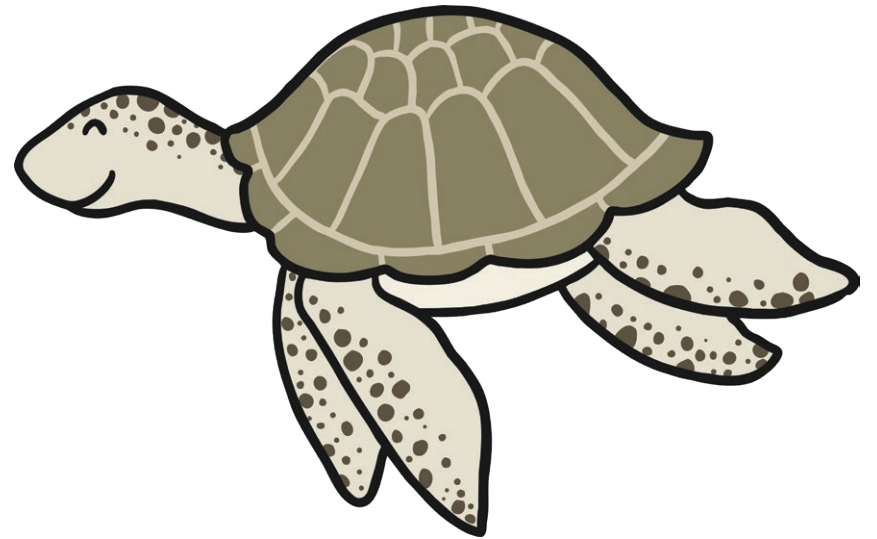
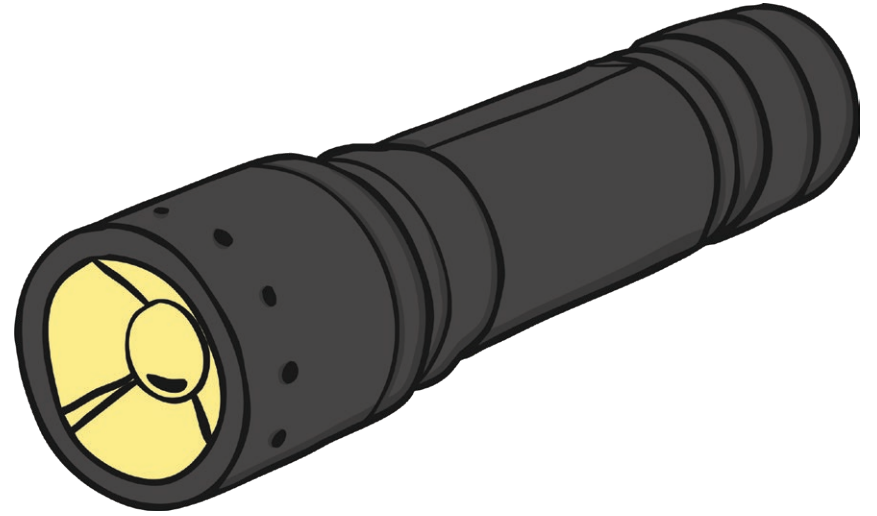
Initial Sound Silly Soup Game

S



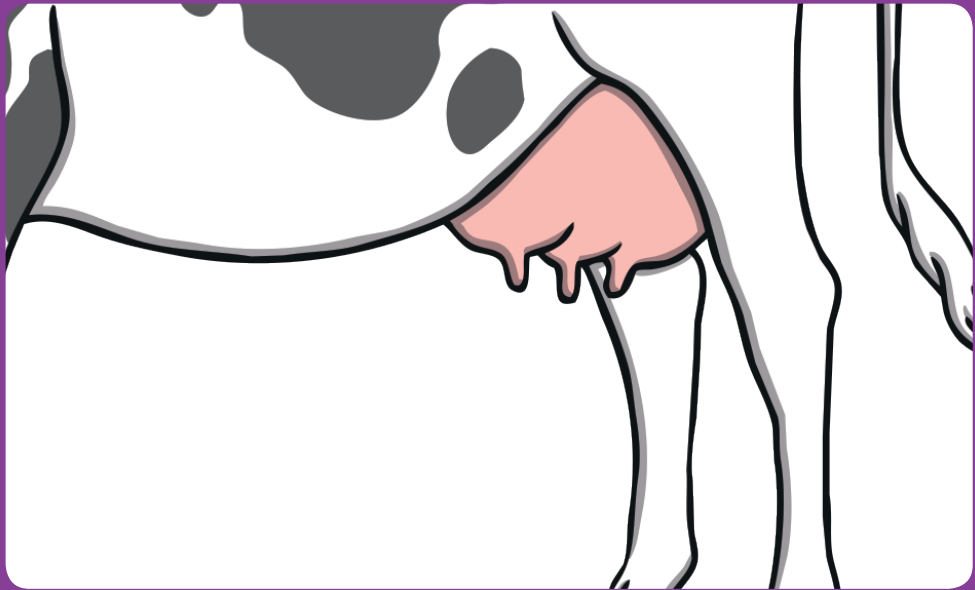
Initial Sound Silly Soup Game

t



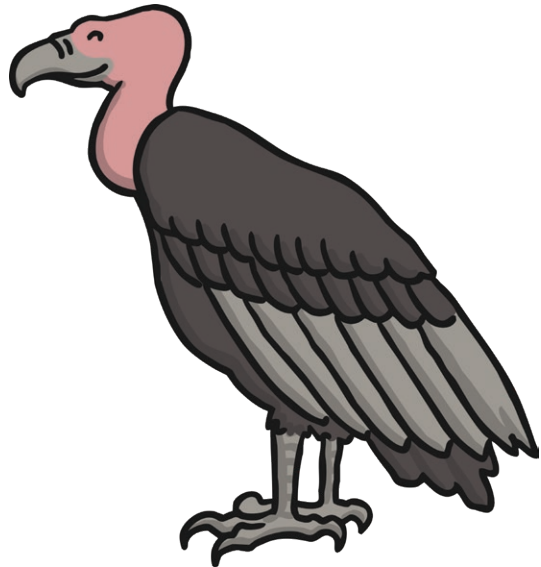
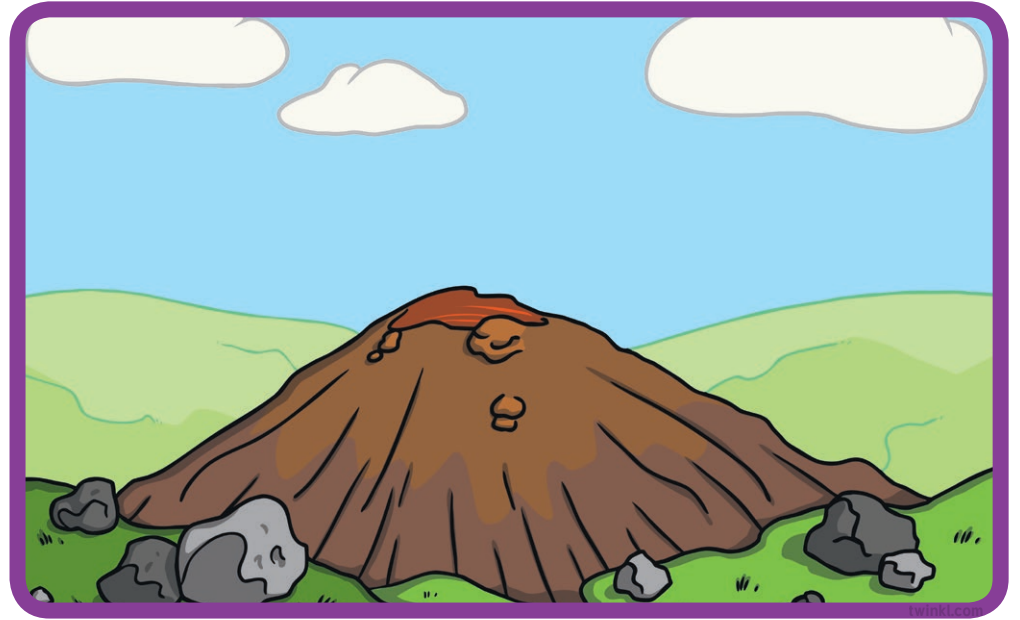
Initial Sound Silly Soup Game

u



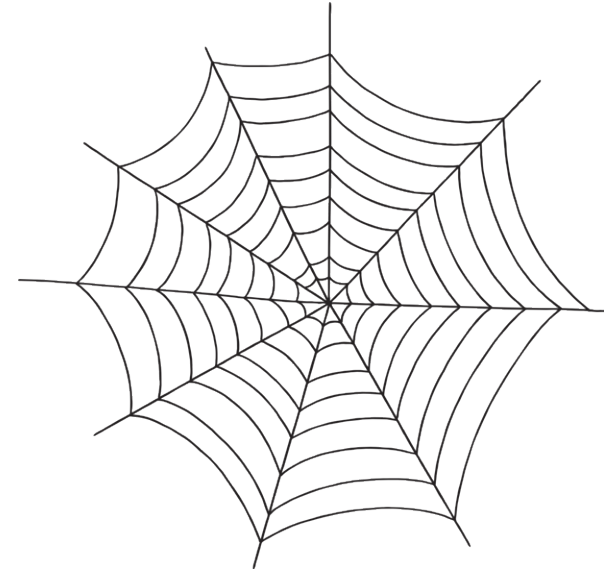
Initial Sound Silly Soup Game

V



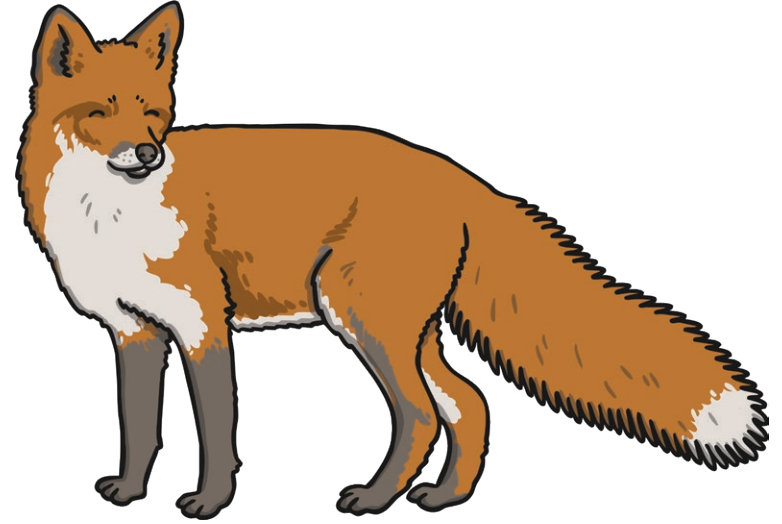
Initial Sound Silly Soup Game

W



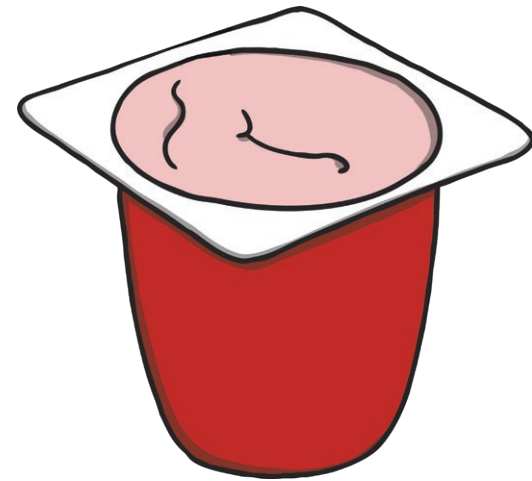
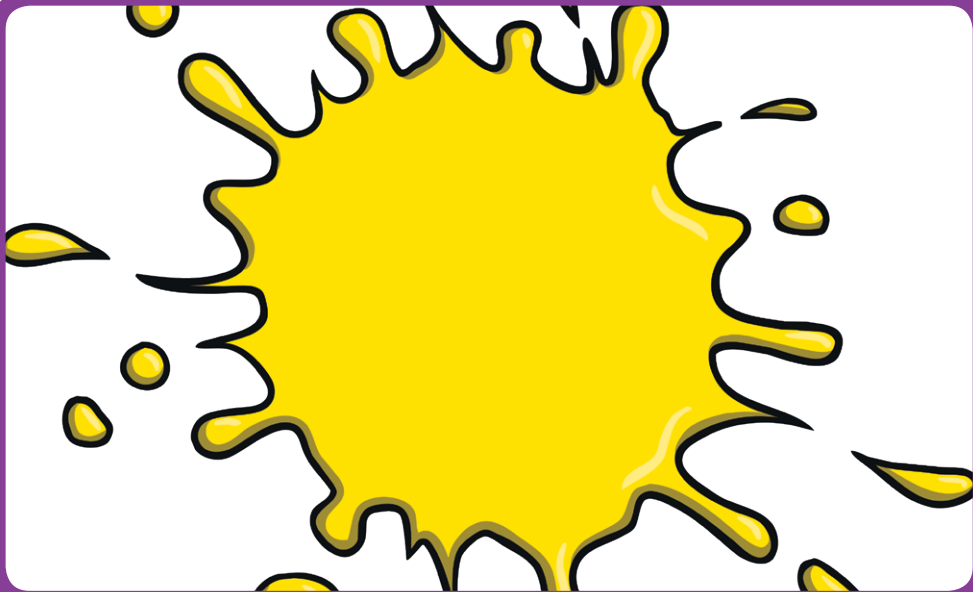
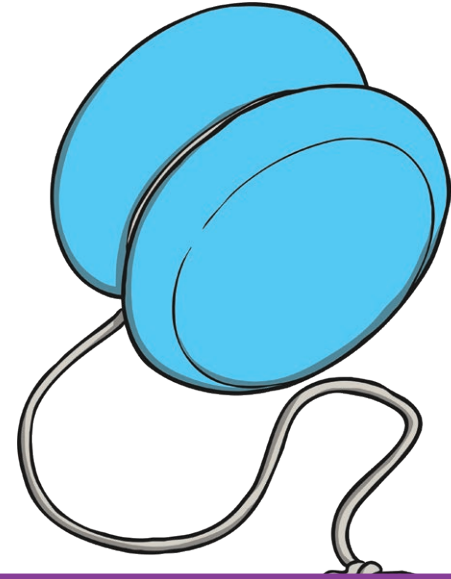
Initial Sound Silly Soup Game

Focus on the final sound for x

A large, bold, black capital letter 'X' is centered within a purple-bordered square frame.

Initial Sound Silly Soup Game

y



Initial Sound Silly Soup Game

Z

